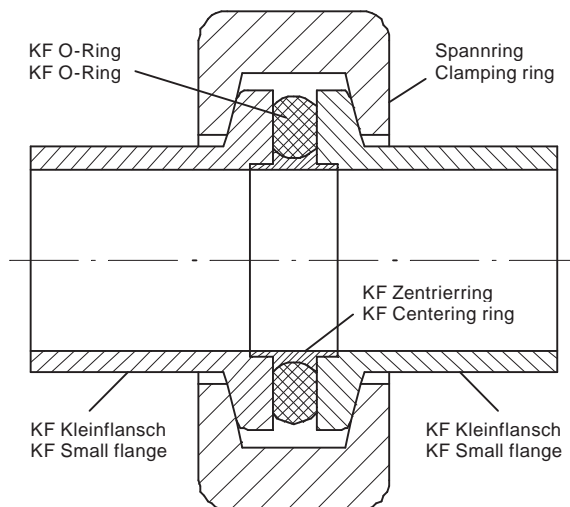


KF Kleinflanschverbindungen DIN 28403 + ISO 2861 aus Aluminium und Edelstahl

KF Small flange pipe connections DIN 28403 + ISO 2861 made of aluminium and stainless steel



A1.1

Einsatzgebiete

Die KF Kleinflanschverbindungen werden insbesondere in der Hochvakuumtechnik eingesetzt. Sie sind aber auch für gasförmige und flüssige Medien geeignet. Bevorzugte Anwendungsbereiche sind Forschungsinstitute, Laboratorien, Halbleiterindustrie, Medizintechnik, Mess- und Regeltechnik, Lasertechnik und Kerntechnik.

Montage

Bei der Montage wird der Zentrierring mit dem O-Ring zwischen den beiden Flanschen angeordnet. Es gibt Innen-, Außen- und Übergangszentrierringe. Die Flansche und der Zentrierring sind damit coaxial zwangszentriert. Anschließend wird der Spannring um die Flansche gelegt und geschlossen, bis die Stirnflächen der Flansche gegen den Zentrierring stoßen. Dabei werden die Flansche fest gegen den O-Ring gepresst, so dass eine dichte Verbindung gegeben ist. Der Spannring wird in vielen unterschiedlichen Ausführungen angeboten.

Merkmale

- Größen: DN10 bis DN50
- Flansche: Edelstahl AISI304, AISI316L
- Zentrierringe: Edelstahl AISI304, AISI316L, Alu
- O-Ringe: NBR, FKM, EPDM, 70° Shore
- Metalldichtung: Alulegierung
- Spannringe: Edelstahl AISI304, Alu
- Druck: Hochvakuum bis 1,5 bar Überdruck

Application

The KF small flange pipe connections are used especially in the high-vacuum technology. They are also suited for gaseous and liquid media. Preferential fields of application are research institutes, laboratories, semiconductor industry, medical technology, measuring and control technology, laser and nuclear technology.

Assembly

During the assembly the centering ring with the O-Ring is positioned between the two flanges. The centering ring can be an inner, an outer or an adapter centering ring. By this the flanges and the centering ring are coaxially centred. Then the clamping ring is applied to the flanges and closed until the flanges get against the centering ring. Thereby the flanges are tightly pressed against the O-Ring, so that a tight connection is attained. The clamping ring is available in many different designs.

Features

- Sizes: DN10 up to DN50
- Flanges: Stainless steel AISI304, AISI316L
- Centering rings: Stainless steel AISI304, AISI316L, Alu
- O-Rings: NBR, FKM, EPDM, 70° Shore
- Metal sealing: Aluminium alloy
- Clamping rings: Stainless steel AISI304, Alu
- Pressure: High-vacuum up to 1,5 bar overpressure

Artikel	Seite
Spannringe.....	12
Zentrierringe, Ersatz O-Ringe.....	14
Blindflansche, Kleinflansche.....	21
Schlauchwellen, Schlauchstutzen.....	22
Einschraubflansche, Aufschraubflansche.....	22
Kernschliffe, Hülsenschliffe.....	24
Zwischenstücke, Reduzierstücke.....	25
Übergangsstücke, Quetschverschraubungen.....	25
Winkel, Bogen, T-Stücke, Kreuzstücke.....	26
Federungskörper, Metallschläuche, PVC-Schläuche.....	29
Belüftungsventile, Eckventile, Kugelventile etc.....	31
Röhrenfedervakuummeter.....	35

Articles	Page
Clamping rings.....	12
Centering rings, replacement O-rings.....	14
Blind flanges, small flanges.....	21
Hose nozzles.....	22
Screw-in flanges, screw-on flanges.....	22
Ground joint plug, ground joint socket.....	24
Intermediate pieces, reducing pieces.....	25
Adapter pieces, squeeze connections.....	25
Angles, bends, T-pieces, cross pieces.....	26
Metal bellows, metal hoses, PVC hoses.....	29
Ventilation valves, angle valves, ball valves etc.....	31
Vacuum gauge.....	35

KF Kleinflanschverbindungen DIN 28403 + ISO 2861

Art.No.

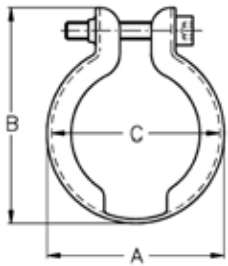
EUR

Art.No.

EUR

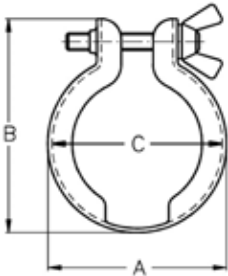
**Spannring FL-Compact
Clamping ring FL-Compact**

DN	A	B	C					AISI304	
10/16	36	45	33,5					110110	6,40
20/25	46	57	43,5					110111	7,60
32/40	61	74	58,5					110112	9,40



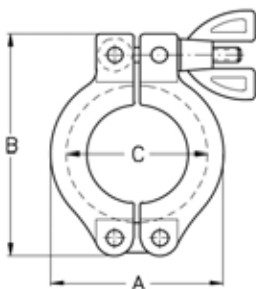
**Spannring FL-Spezial
Clamping ring FL-Spezial**

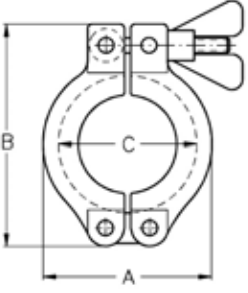
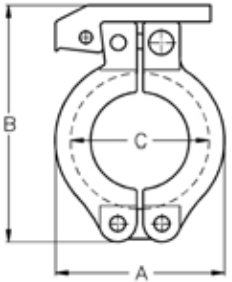
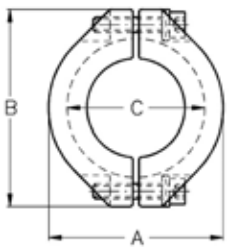
DN	A	B	C					AISI304	
10/16	36	45	33,5					110210	8,40
20/25	46	57	43,5					110211	9,60
32/40	61	74	58,5					110212	11,40



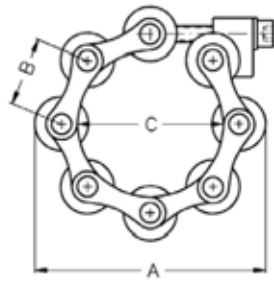
**Spannring FL-Optimal
Clamping ring FL-Optimal**

DN	A	B	C			AS, Alu-Stahl		AE, Alu-Edelstahl	
10/16	45	62	34			110310	8,90	110410	15,40
20/25	55	73	44			110311	10,50	110411	16,90
32/40	70	90	59			110312	12,10	110412	19,40
50	95	125	80			110307	24,10	110407	32,40

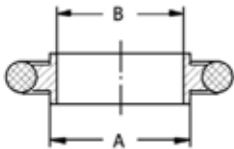


KF Kleinflanschverbindungen DIN 28403 + ISO 2861							Art.No.	EUR	Art.No.	EUR
Spannring FL-Optimal EE Clamping ring FL-Optimal EE 	DN	A	B	C				AISI304		
	10/16	45	62	34				110510	28,30	
	20/25	55	73	44				110511	32,10	
	32/40	70	90	59				110512	36,30	
	50	95	125	80				110507	42,10	
Schnellspannring FL-Rekord Quick release clamp FL-Rekord 	DN	A	B	C				Alu-Stahl-POM		
	10/16	45	68	34				110610	11,80	
	20/25	55	79	44				110611	13,50	
	32/40	70	96	59				110612	15,20	
Spannring FL-Massiv Clamping ring FL-Massiv 	DN	A	B	C				AISI304		
	10/16	47	55	35				110810	28,10	
	20/25	57	66,5	45				110811	31,80	
	32/40	72	82,5	60				110812	35,50	
	50	96	112	80				110807	44,40	

A1

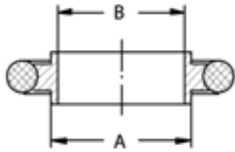
KF Kleinflanschverbindungen DIN 28403 + ISO 2861
Art.No.
EUR
Art.No.
EUR
Spannkette FL-Ultra
Clamping chain FL-Ultra


DN	A	B	C	Rollen				AISI304	
10/16	64	25,4	34	5				110910	Anfrage
20/25	74	25,4	44	6				110911	Anfrage
32/40	89	25,4	59	8				110912	Anfrage
50	109	25,4	79	11				110907	Anfrage

KF Innenzentrierring
KF Inner centering ring


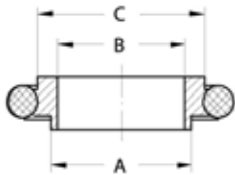
DN	A	B				AISI304-NBR		AISI304-FKM	
10	12	10				120101	3,40	120201	3,80
16	17	16				120102	3,60	120202	4,30
20	22	20				120103	5,80	120203	6,50
25	26	25				120104	6,20	120204	7,20
32	34	32				120105	7,60	120205	8,70
40	41	40				120106	8,30	120206	9,60
50	52	50				120107	10,10	120207	11,50

DN	A	B					AISI304-EPDM	
10	12	10					123601	3,80
16	17	16					123602	4,30
20	22	20					123603	6,50
25	26	25					123604	7,20
32	34	32					123605	8,70
40	41	40					123606	9,60
50	52	50					123607	11,50

KF Kleinflanschverbindungen DIN 28403 + ISO 2861
Art.No.
EUR
Art.No.
EUR
KF Innenzentrierung
KF Inner centering ring


DN	A	B				AISI316L-NBR		AISI316L-FKM	
10	12	10				125101	4,70	125201	5,00
16	17	16				125102	4,90	125202	5,40
20	22	20				125103	10,30	125203	11,00
25	26	25				125104	10,60	125204	11,70
32	34	32				125105	17,30	125205	18,40
40	41	40				125106	17,80	125206	19,10
50	52	50				125107	19,70	125207	21,10

DN	A	B				AISI316L-EPDM	
10	12	10				125301	5,00
16	17	16				125302	5,40
20	22	20				125303	11,00
25	26	25				125304	11,70
32	34	32				125305	18,40
40	41	40				125306	19,10
50	52	50				125307	21,10

KF Übergangszentrierung
KF Adapter centering ring


DN	A	B	C			AISI304-NBR		AISI304-FKM	
10/16	12	10	17			120310	5,20	120410	5,80
20/25	22	20	26			120311	7,60	120411	8,70
32/40	34	32	41			120312	9,30	120412	10,60

KF Kleinflanschverbindungen DIN 28403 + ISO 2861

Art.No.

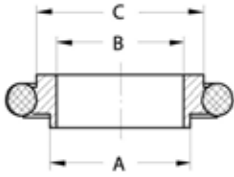
EUR

Art.No.

EUR

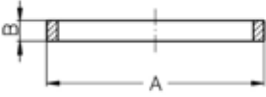
KF Übergangszentrierring
KF Adapter centering ring


DN	A	B	C					AISI304-EPDM	
10/16	12	10	17					123910	5,80
20/25	22	20	26					123911	8,70
32/40	34	32	41					123912	10,60

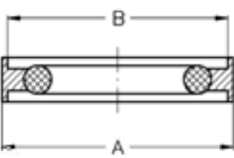


DN	A	B	C			AISI316L-NBR		AISI316L-FKM	
10/16	12	10	17			125410	7,30	125510	8,00
20/25	22	20	26			125411	13,50	125511	14,40
32/40	34	32	41			125412	18,50	125512	20,10

DN	A	B	C					AISI316L-EPDM	
10/16	12	10	17					125610	8,00
20/25	22	20	26					125611	14,50
32/40	34	32	41					125612	20,10

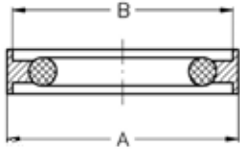
KF Kleinflanschverbindungen DIN 28403 + ISO 2861							Art.No.	EUR	Art.No.	EUR
KF Außenstützring KF Outer supporting ring 	DN	A	B				AISI304			
	10	29	3,7						120501	4,90
	16	32	3,7						120502	5,40
	20	39	3,7						120503	7,20
	25	42	3,7						120504	7,90
	32	54	3,7						120505	9,30
	40	56	3,7						120506	9,80
	50	69,5	3,7						120507	13,70

KF Metaldichtung KF Metal sealing ring 	DN	A	B				Aluminium			
	10/16	32	30,1						120810	5,90
	20/25	42	40,1						120811	6,50
	32/40	57	55,1						120812	7,50
	50	77	75,1						120807	16,70

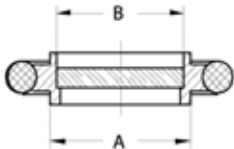
KF Außenzentrierring KF Outer centering ring 	DN	A	B				Alu-NBR		Alu-FKM	
	10/16	32	30,1				122110	5,30	122210	5,90
	20/25	42	40,1				122111	6,00	122211	6,90
	32/40	57	55,1				122112	7,80	122212	9,20
	50	77	75,1				122107	15,90	122207	17,40

KF Kleinflanschverbindungen DIN 28403 + ISO 2861
Art.No.
EUR
Art.No.
EUR
KF Außenzentrierring
KF Outer centering ring

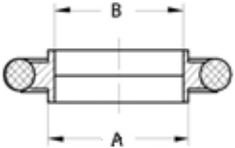
DN	A	B						Alu-EPDM	
10/16	32	30,1						122310	5,90
20/25	42	40,1						122311	6,90
32/40	57	55,1						122312	9,20
50	77	75,1						122307	17,40

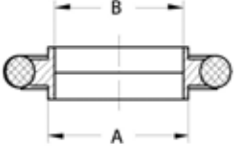

KF Zentrierring mit Bronzefilter
KF Centering ring with bronze filter

DN	A	B	Filter				AISI304-NBR		AISI304-FKM	
10	12	10	45 µm				122401	16,30	122501	16,60
16	17	16	45 µm				122402	19,50	122502	20,10
25	26	25	45 µm				122404	27,10	122504	28,20
40	41	40	45 µm				122406	35,60	122506	36,90



DN	A	B	Filter					AISI304-EPDM	
10	12	10	45 µm					122601	16,70
16	17	16	45 µm					122602	20,10
25	26	25	45 µm					122604	28,20
40	41	40	45 µm					122606	36,90

KF Kleinflanschverbindungen DIN 28403 + ISO 2861							Art.No.	EUR	Art.No.	EUR																																																												
KF Zentrierring mit Drahtsieb KF Centering ring with wire sieve 	DN	A	B	MW			AISI304-NBR		AISI304-FKM																																																													
	16	17	16	0,315			122702	20,60	122802	21,20																																																												
	25	26	25	0,315			122704	24,40	122804	25,30																																																												
	40	41	40	0,315			122706	35,50	122806	36,70																																																												
	50	52	50	0,315			122707	44,70	122807	46,00																																																												
	MW = Maschenweite in mm Mesh-wideness in mm																																																																					
							<table border="1"> <thead> <tr> <th>DN</th> <th>A</th> <th>B</th> <th>MW</th> <th></th> <th></th> <th colspan="2">AISI304-EPDM</th> </tr> </thead> <tbody> <tr> <td>16</td> <td>17</td> <td>16</td> <td>0,315</td> <td></td> <td></td> <td></td> <td></td> <td>122902</td> <td>21,20</td> </tr> <tr> <td>25</td> <td>26</td> <td>25</td> <td>0,315</td> <td></td> <td></td> <td></td> <td></td> <td>122904</td> <td>25,30</td> </tr> <tr> <td>40</td> <td>41</td> <td>40</td> <td>0,315</td> <td></td> <td></td> <td></td> <td></td> <td>122906</td> <td>36,70</td> </tr> <tr> <td>50</td> <td>52</td> <td>50</td> <td>0,315</td> <td></td> <td></td> <td></td> <td></td> <td>122907</td> <td>46,00</td> </tr> <tr> <td colspan="7">MW = Maschenweite in mm Mesh-wideness in mm</td> <td></td> <td></td> <td></td> <td></td> </tr> </tbody> </table>					DN	A	B	MW			AISI304-EPDM		16	17	16	0,315					122902	21,20	25	26	25	0,315					122904	25,30	40	41	40	0,315					122906	36,70	50	52	50	0,315					122907	46,00	MW = Maschenweite in mm Mesh-wideness in mm										
DN	A	B	MW			AISI304-EPDM																																																																
16	17	16	0,315					122902	21,20																																																													
25	26	25	0,315					122904	25,30																																																													
40	41	40	0,315					122906	36,70																																																													
50	52	50	0,315					122907	46,00																																																													
MW = Maschenweite in mm Mesh-wideness in mm																																																																						

KF Zentrierring mit Filtervlies KF Centering ring with filter-fleece 	DN	A	B	Filter			AISI304-NBR		AISI304-FKM	
	16	17	16	45 µm			124202	21,80	124302	22,40
	25	26	25	45 µm			124204	26,00	124304	27,00
	40	41	40	45 µm			124206	37,80	124306	39,10
	50	52	50	45 µm			124207	57,60	124307	48,90

KF Kleinflanschverbindungen DIN 28403 + ISO 2861

Art.No.

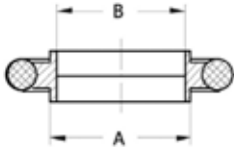
EUR

Art.No.

EUR

KF Zentrierring mit Filtervlies
KF Centering ring with filter-fleece

DN	A	B	Filter					AISI304-EPDM	
16	17	16	45 µm					124402	22,40
25	26	25	45 µm					124404	27,00
40	41	40	45 µm					124406	39,10
50	52	50	45 µm					124407	48,90

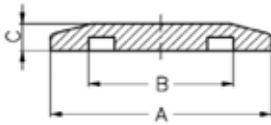


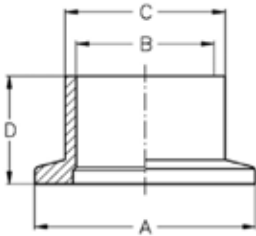
KF Ersatz O-Ring
KF Replacement O-ring

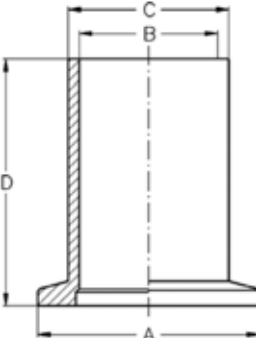
DN	A	B				NBR		FKM	
10	15	5				121001	0,60	121101	0,90
16	18	5				121002	0,70	121102	1,20
20	25	5				121003	0,80	121103	1,60
25	28	5				121004	0,80	121104	1,80
32	40	5				121005	0,90	121105	2,00
40	42	5				121006	0,90	121106	2,20
50	55	5				121007	1,10	121107	2,50

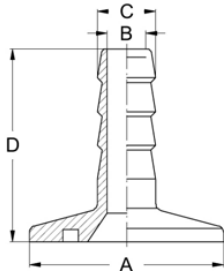
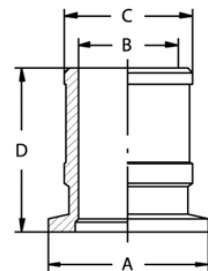
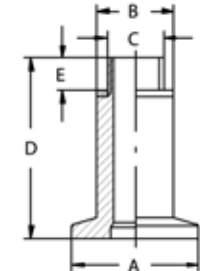
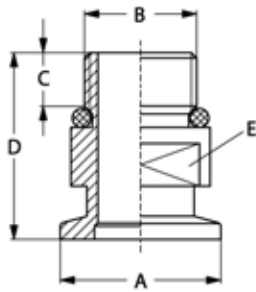
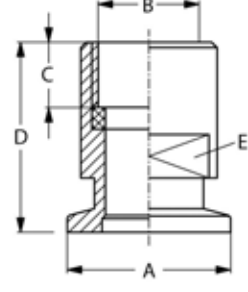


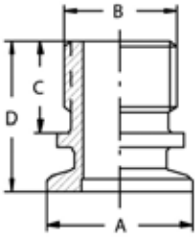
DN	A	B					EPDM	
10	15	5					120901	0,90
16	18	5					120902	1,20
20	25	5					120903	1,60
25	28	5					120904	1,80
32	40	5					120905	2,00
40	42	5					120906	2,20
50	55	5					120907	2,50

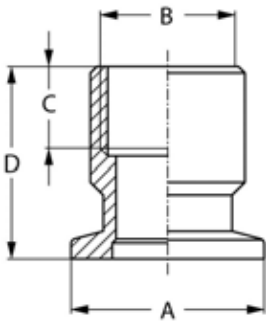
KF Kleinflanschverbindungen DIN 28403 + ISO 2861							Art.No.	EUR	Art.No.	EUR
KF Blindflansch KF Blind flange 	DN	A	B	C			AISI304		AISI316L	
	10/16	30	17,2	5			130110	5,20	134610	7,30
	20/25	40	26,2	5			130111	6,40	134611	11,90
	32/40	55	41,2	5			130112	9,80	134612	14,70
	50	75	52,2	5			130107	14,80	134607	20,40

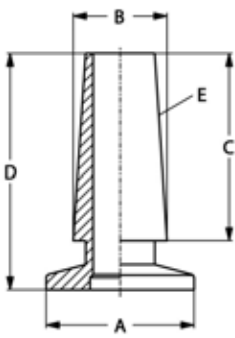
KF Kleinflansch kurz KF Small flange short 	DN	A	B	C	D		AISI304		AISI316L	
	10	30	10	14	16		130201	9,10	134301	17,60
	16	30	16	20	16		130202	9,40	134302	19,60
	20	40	21	25	20		130203	10,80	134303	20,20
	25	40	24	28	20		130204	11,60	134304	20,90
	32	55	34	38	25		130205	19,10	134305	26,90
	40	55	40,5	44,5	25		130206	20,30	134306	31,60
	50	75	51	57	25		130207	24,40	134307	38,00

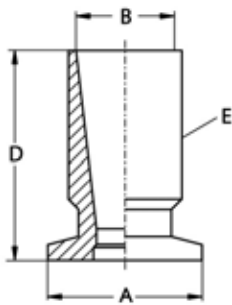
KF Kleinflansch lang KF Small flange long 	DN	A	B	C	D		AISI304		AISI316L	
	10	30	10	14	52		130301	19,40	134401	31,40
	16	30	16	20	52		130302	22,90	134402	34,00
	20	40	21	25	55		130303	27,80	134403	36,70
	25	40	24	28	55		130304	29,20	134404	36,70
	32	55	34	38	58		130305	53,60	134405	40,50
	40	55	40,5	44,5	58		130306	36,80	134406	42,20
	50	75	51	57	58		130307	45,50	134407	53,80

KF Kleinflanschverbindungen DIN 28403 + ISO 2861							Art.No.	EUR	Art.No.	EUR
KF Schlauchwelle KF Hose nozzle 	DN	A	B	C	D				AISI304	
	10	30	4	7	40				134901	21,80
	10/16	30	8	12	40				130410	21,80
	20/25	40	8	12	40				130411	26,00
	32/40	55	8	12	40				130412	32,90
	50	75	8	12	40				130407	42,10
KF Schlauchstutzen KF Hose nozzle 	DN	A	B	C	D				AISI304	
	16	30	16	21,5	40				135802	31,70
	25	40	25	31,5	40				135804	36,80
	40	55	37,5	41,5	40				135806	46,70
	50	75	47,5	51,5	40				135807	62,30
KF Gewindeflansch KF Screw flange 	DN	A	B	C	D	E			AISI304-FKM	
	10	30	18	G1/4"	41	8			136101	38,80
KF Einschraubflansch KF Screw-in flange 	DN	A	B	C	D	E			AISI304-FKM	
	10	30	G3/8"	11	35	SW 19			136301	64,10
	16	30	G1/8"	6	26	SW 23			136202	64,10
	16	30	G1/2"	11	35	SW 26			136302	64,10
	25	40	G3/4"	21	45	SW 30			136504	82,90
	25	40	G1"	21	45	SW 32			136304	84,30
KF Aufschraubflansch KF Screw-on flange 	DN	A	B	C	D	E			AISI304-FKM	
	10	30	G3/8"	13	35	SW17			136401	66,30
	16	30	G1/2"	13	35	SW22			136402	66,30
	25	40	G1"	19	45	SW32			136404	90,00

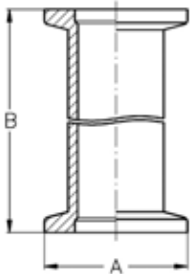
KF Kleinflanschverbindungen DIN 28403 + ISO 2861							Art.No.	EUR	Art.No.	EUR
KF Einschraubklebflansch KF Screw-in glue-flange 	DN	A	B	C	D		AISI304			
	10	30	G3/8"	12	25			137601	35,10	
	16	30	G1/2"	12	25			137602	35,10	
	25	40	G3/4"	17	30			137604	43,20	
	25	40	G1"	17	30			137704	43,20	
	40	55	G1,25"	17	30			137606	48,10	
	40	55	G1,5"	17	30			137706	48,10	
	50	75	G2"	22	35			137607	59,40	

KF Aufschraubklebflansch KF Screw-on glue-flange 	DN	A	B	C	D		AISI304			
	10	30	G3/8"	15	30			137801	36,90	
	16	30	G1/2"	14	30			137802	36,90	
	25	40	G3/4"	14	30			137804	46,60	
	40	55	G1"	14	30			137806	51,20	
	50	75	G1,5"	19	35			137807	73,40	
	50	75	G2"	17	35			137907	78,90	

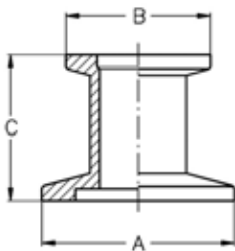
KF Kernschliff KF Ground joint plug 	DN	A	B	C	D	E	AISI 304			
	10	30	18,8	38	47,5	NS 19/38		136701	69,10	
	25	40	18,8	38	49	NS 19/38		136704	76,20	
	25	40	29,2	32	41,5	NS 29/32		136804	81,10	
	40	55	29,2	32	43,5	NS 29/32		136806	105,30	
	40	55	45	40	49,5	NS 45/40		136906	114,30	

KF Kleinflanschverbindungen DIN 28403 + ISO 2861
Art.No.
EUR
Art.No.
EUR
KF Hülsenschliff
KF Ground joint socket


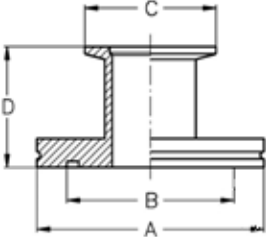
DN	A	B	D	E				AISI304	
10	30	14,5	38	NS 14/35				137101	60,90
10	30	18,8	41	NS 19/38				137201	71,10
25	40	18,8	41	NS 19/38				137204	99,80
25	40	29,2	35	NS 29/32				137304	117,90
40	55	29,2	35	NS 29/32				137306	125,40
40	55	45	43	NS 45/40				137406	140,60

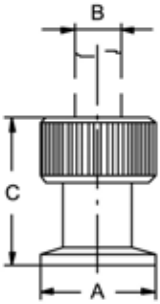
KF Zwischenstück
KF Intermediate piece


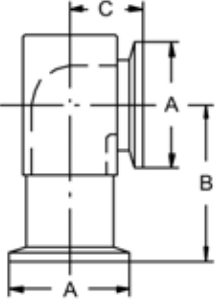
DN	A	B						AISI304	
10	30	60						130501	32,40
16	30	80						130502	36,80
25	40	100						130504	50,60
40	55	130						130506	71,80
50	75	140						130507	91,90
Andere Längen auf Anfrage. Other lengths on inquiry.									

KF Reduzierstück
KF Reducing piece


DN	A	B	C					AISI304	
25/10	40	30	30					130614	37,50
25/16	40	30	30					130615	37,50
40/10	55	30	30					130617	43,40
40/16	55	30	30					130618	43,40
40/25	55	40	30					130619	43,40
50/16	75	30	30					130621	60,80
50/25	75	40	30					130622	60,80
50/40	75	55	30					130623	60,80

KF Kleinflanschverbindungen DIN 28403 + ISO 2861							Art.No.	EUR	Art.No.	EUR
ISO-K/KF Übergangsstück ISO-K/KF Adapter piece 	DN	A	B	C	D		AISI304			
	63/25	95	70	40	50				330970	86,90
	63/40	95	70	55	50				330972	93,80
	63/50	95	70	75	50				330973	103,50
	100/40	130	102	55	50				330976	110,70
	100/50	130	102	75	50				330977	114,90

KF Quetschverschraubung KF Squeeze connection 	DN	A	B	C			AISI304-FKM		
	10-B10	30	10	35				134124	Anfrage
	10-B12	30	12	40				134125	Anfrage
	40-B20	55	20	45				134126	Anfrage
	40-B25	55	25	45				134127	Anfrage

KF Winkel 90° kurz KF Angle 90° short 	DN	A	B	C			Aluminium		
	10	30	40	19,5				135001	Anfrage
	16	30	40	19,5				135002	Anfrage
	25	40	50	24,5				135004	Anfrage
	40	55	60	34,5				135006	Anfrage

KF Kleinflanschverbindungen DIN 28403 + ISO 2861

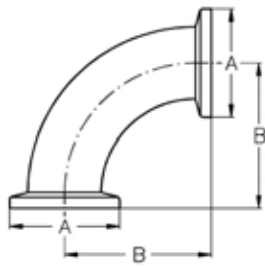
Art.No.

EUR

Art.No.

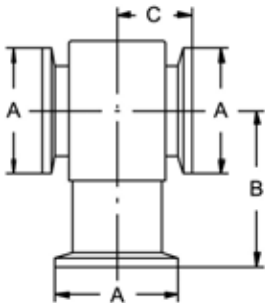
EUR

KF Bogen 90°
KF Bend 90°



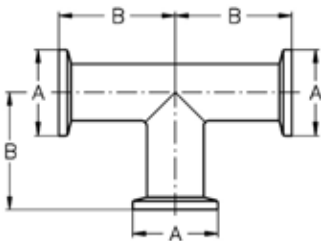
DN	A	B						AISI304	
10	30	30						130701	64,80
16	30	40						130702	69,40
25	40	50						130704	87,50
40	55	65						130706	104,80
50	75	70						130707	116,20

KF T-Stück kurz
KF T-piece short

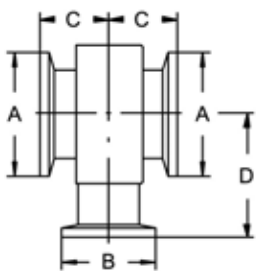


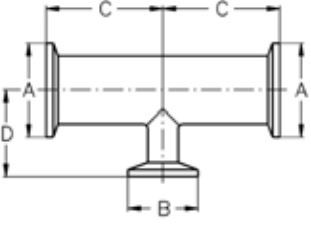
DN	A	B	C					Aluminium	
10	30	40	19,5					135101	Anfrage
16	30	40	19,5					135102	Anfrage
25	40	50	24,5					135104	Anfrage
40	55	60	34,5					135106	Anfrage

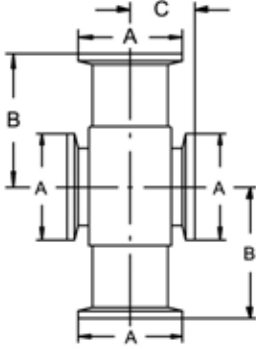
KF T-Stück
KF T-piece



DN	A	B						AISI304	
10	30	30						130801	86,40
16	30	40						130802	91,20
25	40	50						130804	112,40
40	55	65						130806	131,80
50	75	70						130807	141,30

KF Kleinflanschverbindungen DIN 28403 + ISO 2861							Art.No.	EUR	Art.No.	EUR
KF Reduzier T-Stück kurz KF Reducing T-piece short 	DN	A	B	C	D		Aluminium			
	25/10	40	30	22	40			135214	Anfrage	
	25/16	40	30	22	40			135215	Anfrage	
	40/10	55	30	29,5	50			135217	Anfrage	
	40/16	55	30	29,5	50			135218	Anfrage	
	40/25	55	40	29,5	50			135219	Anfrage	

KF Reduzier T-Stück KF Reducing T-piece 	DN	A	B	C	D		AISI304			
	25/10	40	30	50	37			133814	Anfrage	
	25/16	40	30	50	37			133815	Anfrage	
	40/10	55	30	65	45			133817	Anfrage	
	40/16	55	30	65	45			133818	Anfrage	
	40/25	55	40	65	45			133819	Anfrage	
	50/10	75	30	70	50			133820	Anfrage	
	50/16	75	30	70	50			133821	Anfrage	

KF Kreuzstück kurz KF Cross piece short 	DN	A	B	C			Aluminium			
	10	30	40	19,5				135301	Anfrage	
	16	30	40	19,5				135302	Anfrage	
	25	40	50	24,5				135304	Anfrage	
	40	55	60	34,5				135306	Anfrage	

KF Kleinflanschverbindungen DIN 28403 + ISO 2861
Art.No.
EUR
Art.No.
EUR
KF Kreuzstück
KF Cross piece
DN
A
B
AISI304
10

30

30

130901

Anfrage
16

30

40

130902

Anfrage
25

40

50

130904

Anfrage
40

55

65

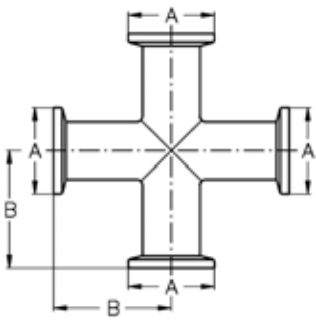
130906

Anfrage
50

75

70

130907

Anfrage

KF Reduzierkreuzstück kurz
KF Reducing cross piece short
DN
A
B
C
D
Aluminium
25/10

40

30

22

40

135414

Anfrage
25/16

40

30

22

40

135415

Anfrage
40/10

55

30

29,5

50

135417

Anfrage
40/16

55

30

29,5

50

135418

Anfrage
40/25

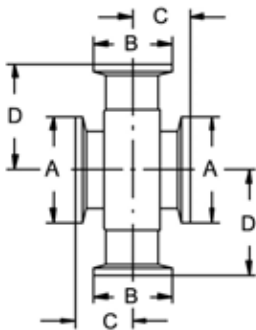
55

40

29,5

50

135419

Anfrage

KF Reduzierkreuzstück
KF Reducing cross piece
DN
A
B
C
D
AISI304
25/10

40

30

50

37

131014

Anfrage
25/16

40

30

50

37

131015

Anfrage
40/10

55

30

65

45

131017

Anfrage
40/16

55

30

65

45

131018

Anfrage
50/10

75

30

70

50

131020

Anfrage
50/16

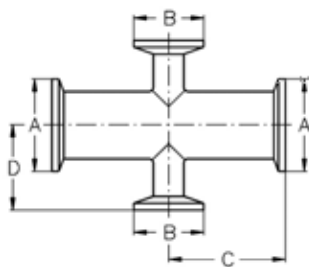
75

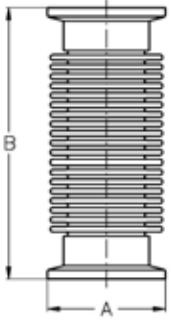
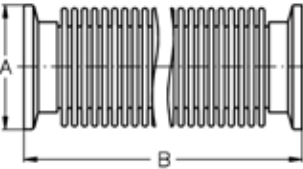
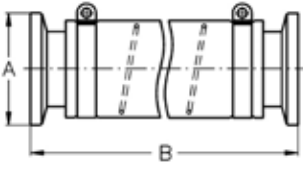
30

70

50

131021

Anfrage


KF Kleinflanschverbindungen DIN 28403 + ISO 2861							Art.No.	EUR	Art.No.	EUR
KF Federungskörper KF Metal bellow 	DN	A	B					AISI304		
	10	30	75					131101	72,50	
	16	30	75					131102	82,90	
	25	40	90					131104	100,50	
	40	55	120					131106	137,40	
	50	75	120					131107	162,60	
KF Metallschlauch, gegläht KF Metal hose, annealed 	DN	A	B					AISI304		
	10	30	250					131201	72,30	
	10	30	500					131301	84,50	
	10	30	750					131401	94,60	
	10	30	1000					131501	105,30	
	16	30	250					131202	79,60	
	16	30	500					131302	92,30	
	16	30	750					131402	105,50	
	16	30	1000					131502	118,40	
	25	40	250					131204	93,40	
	25	40	500					131304	111,70	
	25	40	750					131404	129,60	
	25	40	1000					131504	148,20	
	40	55	250					131206	117,70	
	40	55	500					131306	142,50	
	40	55	750					131406	167,50	
	40	55	1000					131506	192,50	
	50	75	250					131207	137,40	
	50	75	500					131307	170,20	
50	75	750					131407	202,40		
50	75	1000					131507	234,80		
KF Schlauch mit Stützspirale KF Hose with internal reinforcement 	DN	A	B					PVC-AISI304		
	16	30	250					138302	76,90	
	16	30	500					138402	86,40	
	16	30	1000					138502	95,60	
	25	40	250					138304	91,20	
	25	40	500					138404	104,50	
	25	40	1000					138504	118,60	
	40	55	250					138306	110,80	
	40	55	500					138406	126,40	
	40	55	1000					138506	144,80	
	50	75	250					138307	134,20	
50	75	500					138407	155,70		

KF Kleinflanschverbindungen DIN 28403 + ISO 2861

Art.No.

EUR

Art.No.

EUR

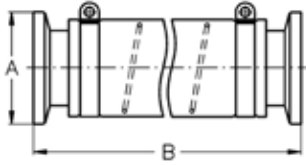
KF Schlauch mit Stützspirale
KFHose with internal reinforcement

DN	A	B							
50	75	1000							

PVC-AISI304

138507 176,90

Andere Längen auf Anfrage.
 Other lengths on inquiry.



KF Ersatzschlauch mit Stützspirale
KFHose with internal reinforcement

DN	A	B	C						
16	20	3,5	1000						
25	30	4	1000						
40	40	4,6	1000						
50	50	5	1000						

PVC-AISI304

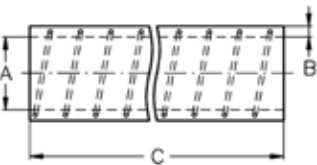
138602 16,80

138604 25,10

138606 34,80

138607 49,40

Andere Längen auf Anfrage.
 Other lengths on inquiry.

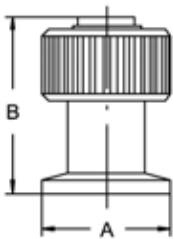


KF Belüftungsventil
KF Ventilation valve

DN	A	B							
10	30	40							

AISI304-FKM

140101 105,40



KF Kleinflanschverbindungen DIN 28403 + ISO 2861

Art.No.

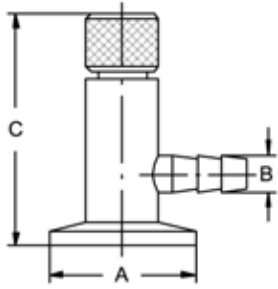
EUR

Art.No.

EUR

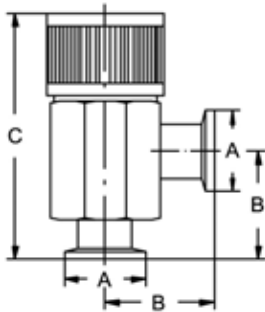
KF Gaseinlassventil
KF Gas inlet valve

DN	A	B	C					AISI304	
10	30	8	65					140301	278,90



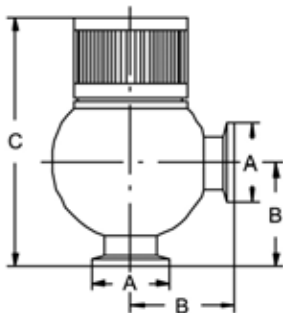
KF Federbalg-Eckventil Alu
KF Bellow-seal angle valve alu

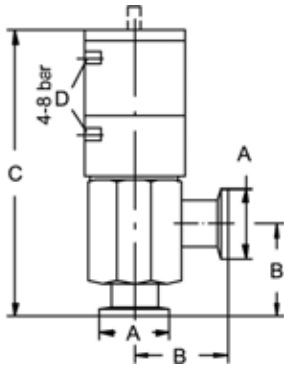
DN	A	B	C					Alu-FKM	
16	30	40	91-99					140402	Anfrage
25	40	50	114-126					140404	Anfrage
40	55	65	139-155					140406	Anfrage
50	75	70	144-160					140407	Anfrage



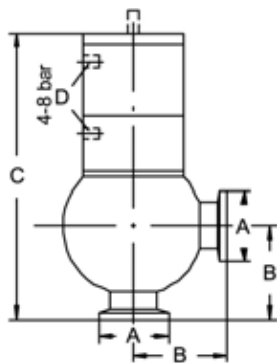
KF Federbalg-Eckventil
KF Bellow-seal angle valve

DN	A	B	C					AISI304-FKM	
16	30	40	96-104					140602	Anfrage
25	40	50	114-126					140604	Anfrage
40	55	65	144-160					140606	Anfrage
50	75	70	150-166					140607	Anfrage

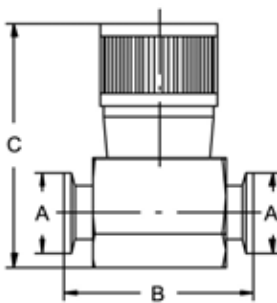


KF Kleinflanschverbindungen DIN 28403 + ISO 2861
Art.No.
EUR
Art.No.
EUR
KF Federbalg-Eckventil, L/F Alu
KF Bellow-seal angle valve, air/spring alu


DN	A	B	C	D		Alu-FKM Normally closed		Alu-FKM Normally open	
16	30	40	133	M5		142302	Anfrage	142702	Anfrage
25	40	50	157	M5		142304	Anfrage	142704	Anfrage
40	55	65	192	M5		142306	Anfrage	142706	Anfrage

KF Federbalg-Eckventil, L/F
KF Bellow-seal angle valve, air/spring


DN	A	B	C	D		AISI304-FKM Normally closed		AISI304-FKM Normally open	
16	30	40	138	M5		142402	Anfrage	142802	Anfrage
25	40	50	157	M5		142404	Anfrage	142804	Anfrage
40	55	65	196	M5		142406	Anfrage	142806	Anfrage

KFFederbalg-Durchgangsventil Alu
KF In-line bellow-seal valve alu


DN	A	B	C					Alu-FKM	
16	30	70	90-98					141102	Anfrage
25	40	80	113-125					141104	Anfrage
40	55	110	150-166					141106	Anfrage

LINNE MANN

 Rohrverbindungen • Edelstahlarmaturen
 Pipe connections • Stainless steel fittings

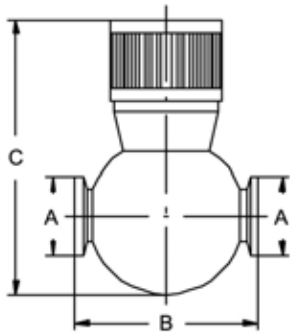
 LINNEMANN GmbH • Heerweg 14-16
 72070 Tübingen / Germany

 Fon: +49 (0) 7071 97555-0
 Fax: +49 (0) 7071 97555-10

 E-Mail: info@linnemann-online.com
 Internet: www.linnemann-online.com

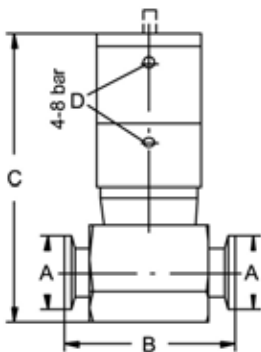
KF Kleinflanschverbindungen DIN 28403 + ISO 2861							Art.No.	EUR	Art.No.	EUR
---	--	--	--	--	--	--	----------------	------------	----------------	------------

KF Federbalg-Durchgangsventil
KF In-line bellow-seal valve



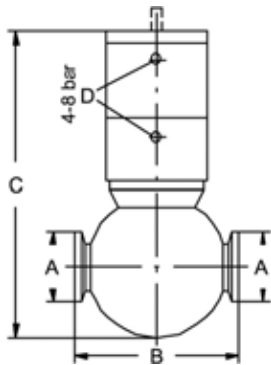
DN	A	B	C				AISI304-FKM	
16	30	70	105-113				141302	Anfrage
25	40	80	124-136				141304	Anfrage
40	55	80	129-141				141306	Anfrage

KF Federbalg-Durchgangsv., L/F Al
KF In-line bellow-seal valve, air/spring alu



DN	A	B	C	D		Alu-FKM Normally closed		Alu-FKM Normally open	
16	30	70	132	M5		142502	Anfrage	142902	Anfrage
25	40	80	156	M5		142504	Anfrage	142904	Anfrage
40	55	110	199	M5		142506	Anfrage	142906	Anfrage

KF Federbalg-Durchgangsventil, L/F
KF In-line bellow-seal valve, air/spring



DN	A	B	C	D		AISI304-FKM Normally closed		AISI304-FKM Normally open	
16	30	70	147	M5		142602	Anfrage	143002	Anfrage
25	40	80	167	M5		142604	Anfrage	143004	Anfrage
40	55	80	172	M5		142606	Anfrage	143006	Anfrage

KF Kleinflanschverbindungen DIN 28403 + ISO 2861
Art.No.
EUR
Art.No.
EUR
KF Kugelventil MS, vernickelt
KF Ball valve MS, nickel plated

DN	A	B	C	D				
10	30	80	61	100				
16	30	95	64	100				
25	40	115	80	120				
40	55	140	104	150				
50	75	165	119	175				

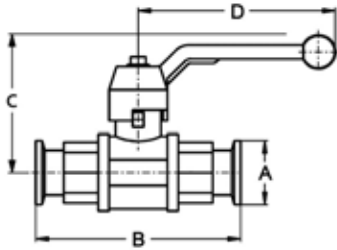
Messing-PTFE

 141501 **89,80**

 141502 **102,80**

 141504 **115,20**

 141506 **220,10**

 141507 **294,70**

KF Kugelventil ES
KF Ball valve ES

DN	A	B	C	D				
10	30	97	60	96				
16	30	103	63	125				
20	40	125	67	125				
25	40	135	83	145				
32	55	162	86	145				
40	55	173	105	200				
50	75	191	114	200				

AISI316-PTFE

 140801 **125,90**

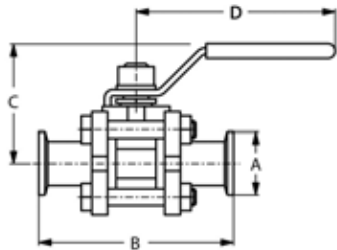
 140802 **142,80**

 140803 **168,10**

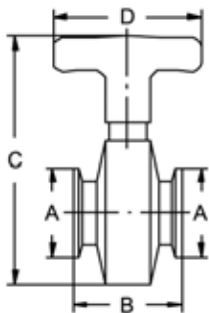
 140804 **179,80**

 140805 **237,60**

 140806 **283,60**

 140807 **397,50**

KF Scheibventil
KF Butterfly valve

DN	A	B	C	D		Alu-FKM		AISI304-FKM	
25	40	50	112	68		141204	Anfrage	141004	307,80
40	55	50	130	80		141206	Anfrage	141006	338,40
50	75	60	140	80		141207	Anfrage	141007	463,20



KF Kleinflanschverbindungen DIN 28403 + ISO 2861

Art.No.

EUR

Art.No.

EUR

KF Rohrfedervakuummeter
KF Vacuum gauge

DN	A	B	C					AISI304	
10	30	100	148					150101	124,10

A1

