

Gewindefittings DIN EN 10241

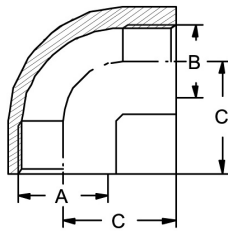
Art.Nr.

EUR

Art.Nr.

EUR

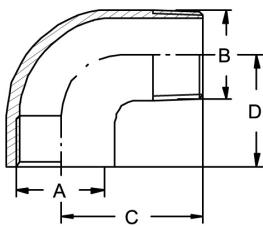
Reduzierwinkel 90°, Rp



DN	A	B	C				AISI316C-1.4408	
10-8	Rp 3/8"	Rp 1/4"	25				544229	15,30
15-8	Rp 1/2"	Rp 1/4"	28				544231	Anfrage
15-10	Rp 1/2"	Rp 3/8"	28				544259	17,40
20-10	Rp 3/4"	Rp 3/8"	33				544260	Anfrage
20-15	Rp 3/4"	Rp 1/2"	33				544261	26,20
25-15	Rp 1"	Rp 1/2"	38				544263	Anfrage
25-20	Rp 1"	Rp 3/4"	38				544264	34,90
32-20	Rp 1,25"	Rp 3/4"	45				544266	Anfrage
32-25	Rp 1,25"	Rp 1"	45				544267	51,30
40-25	Rp 1,5"	Rp 1"	50				544270	Anfrage
40-32	Rp 1,5"	Rp 1,25"	50				544271	68,20
50-32	Rp 2"	Rp 1,25"	58				544273	Anfrage
50-40	Rp 2"	Rp 1,5"	58				544274	100,40

Ähnlich DIN EN 10241

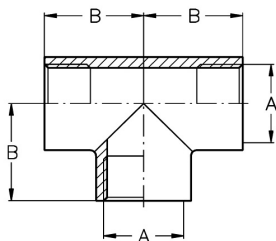
Winkel 90°, RpR



DN	A	B	C	D			AISI316C-1.4408	
6	Rp 1/8"	R 1/8"	26	19			544328	17,50
8	Rp 1/4"	R 1/4"	28,3	19			544329	18,70
10	Rp 3/8"	R 3/8"	35	22,5			544330	19,40
15	Rp 1/2"	R 1/2"	42	29			544331	22,90
20	Rp 3/4"	R 3/4"	50,5	33			544332	33,80
25	Rp 1"	R 1"	52	38			544333	45,40
32	Rp 1,25"	R 1,25"	60	45			544334	67,10
40	Rp 1,5"	R 1,5"	65	50			544335	81,60
50	Rp 2"	R 2"	74	58			544336	120,20
65	Rp 2,5"	R 2,5"	99,5	68			544337	191,40
80	Rp 3"	R 3"	115,5	78			544338	285,30

Ähnlich DIN EN 10241

T-Stück, Rp



DN	A	B					AISI316C-1.4408	
6	Rp 1/8"	17					542528	14,90
8	Rp 1/4"	21					542529	14,90
10	Rp 3/8"	23,6					542530	17,40
15	Rp 1/2"	27					542531	17,90
20	Rp 3/4"	33					542532	20,20
25	Rp 1"	38					542533	31,30
32	Rp 1,25"	45					542534	44,90
40	Rp 1,5"	50					542535	48,80
50	Rp 2"	58					542536	81,20
65	Rp 2,5"	68,7					542537	188,80
80	Rp 3"	77,8					542538	254,00
100	Rp 4"	97					542539	500,70

Ähnlich DIN EN 10241

LINNE MANN
Rohrverbindungen • Edelstahlarmaturen
Pipe connections • Stainless steel fittings

LINNE MANN GmbH • Heerweg 14-16
72070 Tübingen / Germany

Fon: +49 (0) 7071 97555-0
Fax: +49 (0) 7071 97555-10

E-Mail: info@linnemann-online.com
Internet: www.linnemann-online.com