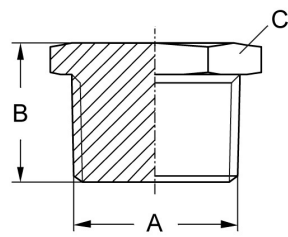


Gewindefittings DIN EN 10241	Art.Nr.	EUR	Art.Nr.	EUR
------------------------------	---------	-----	---------	-----

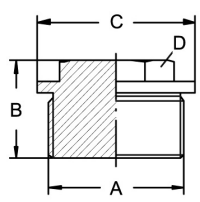
**Sechskantstopfen, R**



DN	A	B	C					AISI316C-1.4408	
6	R 1/8"	17	SW 12					542028	6,60
8	R 1/4"	17,5	SW 16					542029	6,90
10	R 3/8"	18	SW 20					542030	7,30
15	R 1/2"	25	SW 24					542031	8,50
20	R 3/4"	26	SW 30					542032	11,10
25	R 1"	29	SW 38					542033	18,80
32	R 1,25"	35	SW 46					542034	25,60
40	R 1,5"	38	SW 52					542035	38,30
50	R 2"	39	SW 65					542036	41,90
65	R 2,5"	44	SW 81					542037	106,60
80	R 3"	54	SW 94					542038	160,40
100	R 4"	55	SW 119					542039	344,80

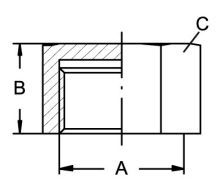
Ähnlich DIN EN 10241

**Verschlusschraube, G**



DN	A	B	C	D				AISI316Ti	
6	G 1/8"	17	14	SW 10				544028	11,40
8	G 1/4"	21	18	SW 13				544029	11,90
10	G 3/8"	21	22	SW 17				544030	14,80
15	G 1/2"	26	26	SW 19				544031	17,60
20	G 3/4"	30	32	SW 24				544032	19,50
25	G 1"	32	39	SW 27				544033	30,70
32	G 1,25"	33	49	SW 30				544034	61,60
40	G 1,5"	33	55	SW 30				544035	73,10
50	G 2"	40	72	SW 36				544036	100,30
65	G 2,5"	50	75	SW 46				544037	123,80
80	G 3"	55	95	SW 50				544038	150,60

**Sechskantkappe, Rp**



DN	A	B	C					AISI316C-1.4408	
6	Rp 1/8"	13	SW 15					542128	6,10
8	Rp 1/4"	17	SW 18					542129	6,40
10	Rp 3/8"	19	SW 21					542130	6,70
15	Rp 1/2"	20	SW 27					542131	8,30
20	Rp 3/4"	24	SW 30					542132	11,80
25	Rp 1"	25	SW 38					542133	17,40
32	Rp 1,25"	28	SW 50					542134	25,70
40	Rp 1,5"	28	SW 55					542135	33,40
50	Rp 2"	34	SW 70					542136	51,30
65	Rp 2,5"	40	SW 92					542137	91,50
80	Rp 3"	45	SW 109					542138	122,30
100	Rp 4"	50	SW 132					542139	206,20

Ähnlich DIN EN 10241